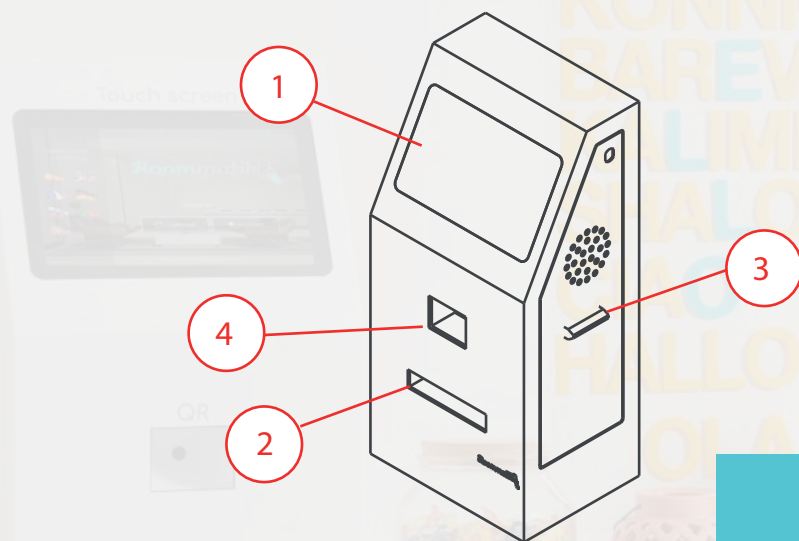


## COMPONENTS



1. Touch screen
2. Documents scanner
3. RFID cards output
4. Barcode scanner

# TECHNICAL DETAILS

## S SIZE S - 100



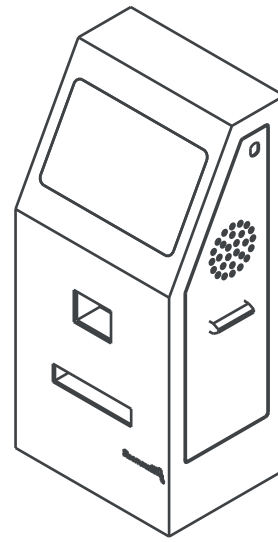
Electrical connection	Standard plug 230 V AC
Power consumption	45 W
Electrical safety	Circuit breaker 10 A
Network connection	RJ-45
Cables outlet	Rear side
Enclosure	2 mm lacquered steel
Shipping weight	17 Kg aprox.
Unpacked weight	15 Kg aprox.
Shipping dimensions	70 x 40 x 30 cm
Unpacked dimensions	62 x 29 x 22 cm
Opening	2 side doors with locks
Screen surface hardness	> 7 H

**Roommatik** 

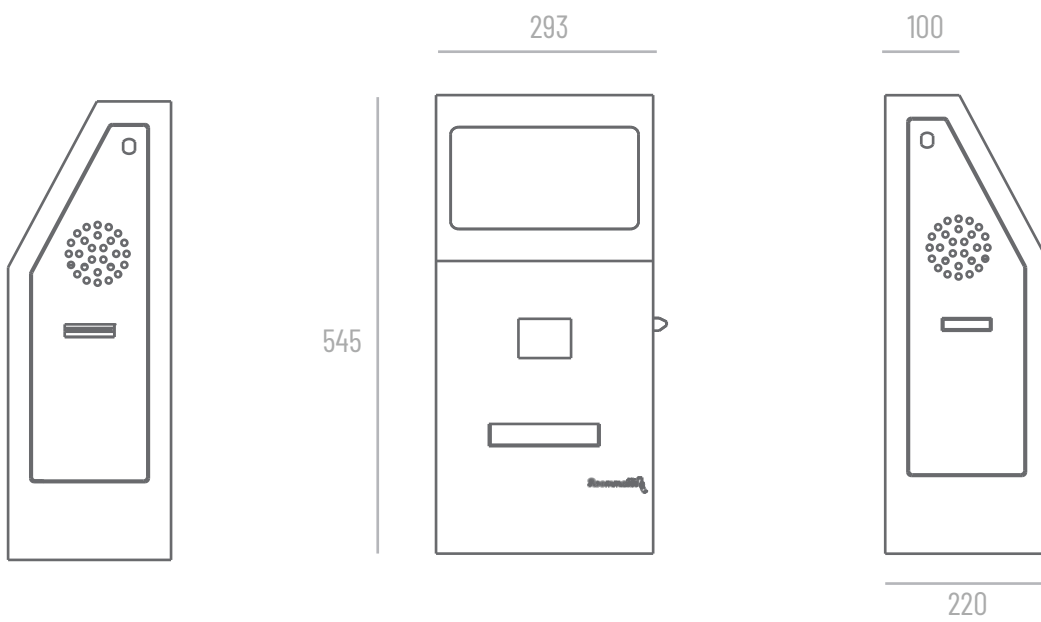
info@roommatik.com  
(+34) 986 262 230  
Dr. Corbal 16, 36207, Vigo (Spain)



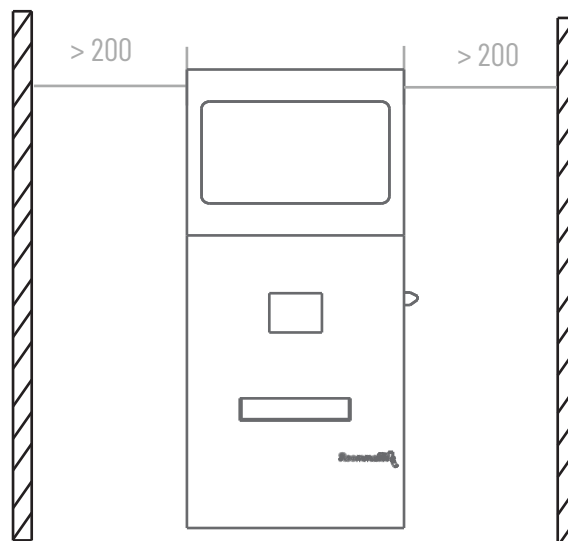
S  
100



### DIMENSIONS



### INSTALLATION



Lateral separation